



DHOLLANDIA



POCKET GUIDE PRODUCT RANGE 2015



DHOLLANDIA

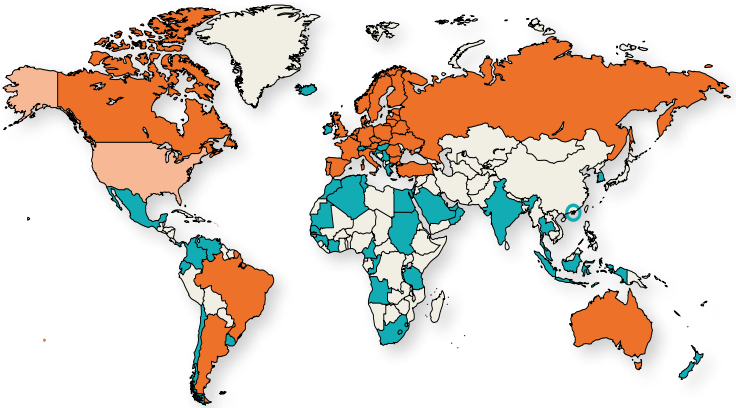
**POCKET GUIDE
PRODUCT RANGE 2015**



Content list

DHOLLANDIA facts & figures	Pg 3
6 good reasons to buy DHOLLANDIA	Pg 4
Best possible protection for your investment	Pg 6
Different types of RIDE	Pg 8
Control units for all applications...	Pg 10
... and an endless list of options to choose from	Pg 12
Professional service network Original spare parts	Pg 13
Reading help	Pg 14
Chapter 1 • Passenger lifts	Pg 16
Chapter 2 • Lifts for factory built panel vans	Pg 42
Chapter 3 • Cantilever lifts	Pg 66
Chapter 4 • Slider lifts	Pg 100
Chapter 5 • Fold-away lifts	Pg 126
Chapter 6 • Special hydraulic applications	Pg 144
Chapter 7 • Column lifts	Pg 162

DHOLLANDIA facts & figures

- Founded in 1968, more than 45 years of experience in the tail lift business
- Europe's N° 1 manufacturer of tail lifts, with production in excess of 35,000 units per year and more than 550,000 units sold since 1968
- Unparalleled product range with lift capacities ranging from 150 to 16,000 kg, all developed via internal growth
- Production sites in 5 countries
- Extensive vertical integration and technological leadership: more than 90% of mechanical, hydraulic and electrical parts used are manufactured in-house
- Professional network of DHOLLANDIA Area Sales & Service Centres (Europe) and independent distributors (outside Europe) in 6 continents and more than 60 countries worldwide



 DHOLLANDIA Group  Independent distributor



See www.dhollandia.com for our worldwide network.



6 good reasons to buy DHOLLANDIA



1- Safe & reliable



- No electronic components, exceptionally reliable
- Adapted to the intensive use and heavy duty work
- Strong & robust 4-cylinder tail lifts (*)
- Electrical safety valves mounted to all cylinders (*)
- Manual emergency back-up operation on all electro valves
- Level ride plus automatic tilt at ground level on most commercial lift models (*)



2- Flexible & client-oriented

- Small enough to care, big enough to cope
- Wide range of standard products ranging from 150 to 16,000 kg
- Extensive vertical integration and technological leadership: more than 90% of all mechanical, hydraulic and electrical parts used are manufactured in-house
- Therefore perfectly geared up to develop and manufacture tailor-made lifts and creative client-oriented solutions



3- Superior finish

- Low maintenance bearings and grease nipples in all critical articulation points
- Piston rods in hard-chromed stainless steel for all cylinders exposed to adverse weather conditions
- Best possible protection against corrosion: **HOT-DIP ZINC PLATED finish** or **Protection PLUS finish** on the majority of lifts

**HOT-DIP
ZINC PLATED**

KTL POWDER
painted + coated
Protection PLUS



4- Economic & budget friendly

- Optimum price-quality ratio
- Lifts designed to allow easy maintenance
- Attractive spare parts prices and low maintenance costs
- Longer life-time and durability



5- Strong environmental focus



- Use of Best Available Techniques in surface treatment and waste water treatment
- Use of rain water for industrial purposes
- Application of wind and solar energy to power manufacturing processes
- Maximum elimination of lost packaging material
- ISO 14001 certified



6- The safe and clever buy

- Modern lift range offering many safety features and functional options
- Professional service network in more than 60 countries across the world
- More than 550.000 units sold are the proof of customer satisfaction and loyalty
- Preferred choice of many transport companies, fleet-owners, rental companies and truck body manufacturers

(*) Generic characteristics for most types of commercial lifts

Best possible protection for your investment

DHOLLANDIA uses 2 premium surface treatment finishes for steel components, raising the quality and corrosion protection of the finished product to the absolute top in the tail lift industry.

Most popular commercial lifts are supplied in **HOT-DIP ZINC PLATED finish**, the less common lifts in **Protection PLUS finish**.



DHOLLANDIA's **Protection PLUS** paint finish combines innovative technologies to raise the quality and corrosion protection of its tail lifts to the highest level.

Protection PLUS incorporates 4 important steps:

1. Shot blasting of the steel substrate
2. 3-cation zinc phosphate
3. KTL cathodic dip epoxy coating (KTL = Katodische Tauch-Lackierung)
4. Polyester powder top coat

E-coat (KTL)



Polyester powder coat



HOT-DIP ZINC PLATING is based on the metallurgic bond between the steel parts and zinc, melted at 460 °C. The zinc-iron alloys formed in this way, offer a number of clear advantages:

**HOT-DIP
ZINC PLATED**

- ▶ **Best possible protection against corrosion**
- ▶ Improved metallurgic characteristics
- ▶ Better protection against shocks and wear
- ▶ Protects the outside **and inside** of steel structures (unlike e-coat or conventional paint systems, whose effect is limited to the painted outside surfaces)

Hot zinc melted at 460 °C



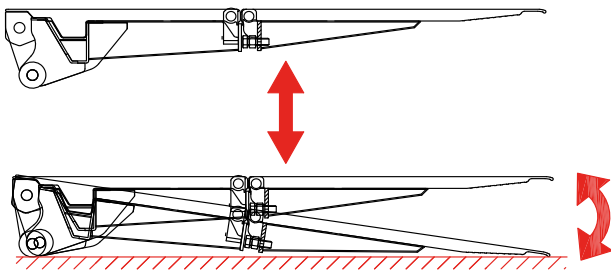
Green technology: life cycle assessments have proven that zinc-plating is the most environmentally friendly method of anti-corrosion protection.

Different types of RIDE

The **RIDE** of a lift describes the movement that its platform goes through when lowering from the vehicle floor to the ground; or vice versa when lifting from the ground to the vehicle floor.

DHOLLANDIA mainly uses 3 types of rides.

1 Wedge or conical platform Level ride + automatic tilt at ground level



When lowering, the platform remains level from the vehicle floor down until the platform rollers touch the ground. Next, the platform tilts down to an inclined position that allows loading and unloading.

When lifting off the ground, the platform first tilts up from its inclined position on the ground to the horizontal level, then continues a level ride to the vehicle floor.

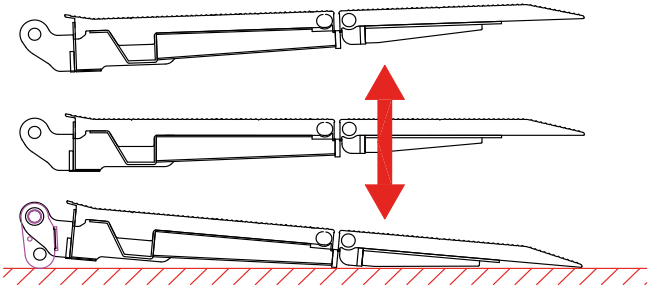
Recommended for:

- ▶ higher capacity applications, heavier loads
- ▶ applications where easy on- and off-loading of pallets with pallet jacks is required
- ▶ applications where adjustable platform orientation is required (tilt cylinders)

Used on:

DH-L and DH-S lifts, most DH-R lifts

② **Half-dip ride**



When lowering, the platform progressively tilts down from a level position at the vehicle floor to an inclined position at the ground. (And vice versa when lifting).

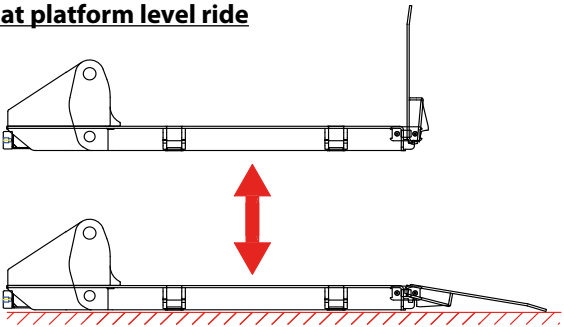
Recommended for:

- ▶ applications where the load is stable on the platform: parcels, tyres, boxes, white & brown goods, drums, etc...
- ▶ Low-budget, low-maintenance environment

Used on:

DH-RP lifts

③ **Flat platform level ride**



The platform remains level during the full lifting / lowering cycles. The rear end of the platform can be a fixed leading edge, or hinged ramps which adjust more easily to uneven surfaces.

Recommended for:

applications where the load is unstable on the platform: roll-cages, tall and top-heavy objects

Used on:

DH-LK and DH-SK lifts, most column lifts, most passenger lifts

Control units for all applications...



DHOLLANDIA offers a wide variety of different control units to suit particular lift models, special applications and the client's individual requirements. Instructions for mounting and risk analysis are available in the mounting instructions.

Most popular auxiliary controls



OAE001



OAE005



OAE011



OAE015



OAE060



E0452 / E0453

Most commonly used exterior control boxes

(conform with CE safety regulations, all exterior control boxes sold in Europe have mandatory 2-hand control)



OAE030.BT

Exterior control box with joy-stick, safety switch and main battery isolator switch



OAE031.Z (OAE035.Z)

3+1 button (or 4+1 button) control unit, integrated in the body panel, or mounted under the vehicle body, without isolator switch



OAE039.BP

Exterior control unit incorporated in the cover of the pump unit, with joy-stick, safety switch and main battery isolator switch



OAE041.BP

Arctic exterior control box with IP67 rated push buttons, safety switch and main battery isolator switch



OAE043.BT

Slim-line arctic exterior control box with IP67 rated toggle switches and main battery isolator switch



... and an endless list of options to choose from



DHOLLANDIA offers an almost endless list of electrical, hydraulic and mechanical options to fine-tune the lift to the client's individual requirements.

The most popular options involve:

- ▶ Control & ergonomics: various main and auxiliary controls
- ▶ Visibility: flashing platform lights & flags
- ▶ Load handling: roll-stops for pallets and roll cages
- ▶ Stability: hydraulic and mechanical stabilising legs
- ▶ Access: side loading ramps
- ▶ Operator safety: safety rails and fall protection, anti-slip platform surface finish & coatings
- ▶ Installation: quick-fit mounting solutions, plug & play connections
- ▶ Independence: battery & charging systems
- ▶ Finish: HOT-DIP ZINC PLATING, Protection Plus or individualised RAL colour schemes

Professional service network

Original spare parts



DHOLLANDIA spare parts =
100% original
100% reliable
100% compatible

DHOLLANDIA lifts are being distributed in more than 60 countries worldwide, through a dedicated and professional network of DHOLLANDIA Area Sales & Service Centres and official independent distributors.

Each of these country distributors holds substantial stock of lifts and original spare parts and can support clients with:

- ▶ commercial and technical advice
- ▶ maintenance, repair and road-side assistance
- ▶ fitting and fitting assistance
- ▶ training on any of the subjects above and operator training

Reading help

Lift capacity

Hydraulic tail lifts are not designed to LIFT / LOWER weights corresponding to their nominal capacity over the full surface of the platform. The nominal capacity is valid at a certain distance or centre of gravity, measured behind the rear of the vehicle body. Behind that centre, which is marked on the platform, the maximum safe working load of any brand of tail lifts diminishes according to specific load diagrams supplied with the lift.

Since lifts are being sold in many capacities and with various centres of gravity, it may seem a difficult task to make an objective comparison. Therefore, the concept load moment combines the nominal lift capacity with the applicable centre of gravity. It allows us to compare the total performance of the machine and to get some appreciation of its ability to endure heavy duty conditions over a longer time period.

Load moment = lift capacity x centre of gravity

Example: 2 lifts with identical capacity but different centre of gravity:

Type DH-LM.20 :

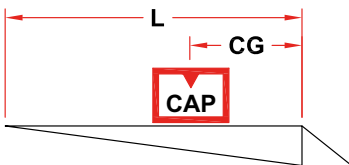
CAP	CG	LM
1500 kg	750 mm	11.25 kNm
2000 kg	750 mm	15 kNm

Type DH-LM.30 :

CAP	CG	LM
1500 kg	1000 mm	15 kNm
2000 kg	1000 mm	20 kNm
2500 kg	1000 mm	25 kNm
3000 kg	1000 mm	30 kNm



$$2000 \text{ kg} \times 750 \text{ mm}$$
$$20 \text{ kN} \times 0.75\text{m} = 15 \text{ kNm}$$



$$\text{LM} = \text{CAP} \times \text{CG}$$

CAP = nominal lift capacity
CG = centre of gravity
LM = load moment = CAP x CG

Units of measurement

Unless stated otherwise within the text, all weights are expressed in kg and all dimensions in mm.

Weight indications of the lifts

Weights:

STEEL platform	
1750 mm	? kg
2000 mm	? kg

ALU platform	
1800 mm	? kg
2000 mm	? kg

DHOLLANDIA lifts are available with a wide choice of different lift arms, lift frames and mounting plates, to allow integration to a wide variety of vehicles in optimum circumstances. Furthermore, most lifts are available with different platform designs and a long list of options to adapt the lift to the client's individual needs.

As a consequence, the weights mentioned in our sales literature are indicative and must be read : "from ... kg onwards". The real weights might vary according to the type of vehicle and the execution of the lift. Ask your national DHOLLANDIA distributor for further detail.

Voltage

Unless stated otherwise within the text, all systems mentioned are designed for 12V - 24V commercial vehicles. Other voltage systems are available on request.

Half width platforms, foldable platforms

All types of cantilever lifts (see chapter 3) are available with the standard platform, covering the full width of the vehicle body. But certain types are also available with half width or partial width platforms and vertically foldable platforms.

This possibility is indicated as follows:



Full width platform available



Half / partial width platform available



Half width frame + foldable platform available



Half / partial width platform not available



Half width frame + foldable platform not available



4

Slider lifts





→ Slider lift for vans and light trucks

DH-SC.04 • 400 kg



The **CITY SLIDER lift** DH-SC.04 is specially designed for mounting on van chassis and light commercial trucks.

In its travel position, the platform is safely stored underneath the chassis of the vehicle, and the driver has free access to the cargo space inside the vehicle body.

In its work position, the platform offers sufficient work surface to manipulate roll-cages, white and brown goods, parcels, etc...

Thanks to its low weight and high flexibility, the DH-SC.04 is ideal for the **urban distribution**.

To keep this lift light, simple and budget friendly, the retraction of the platform is done by hand.

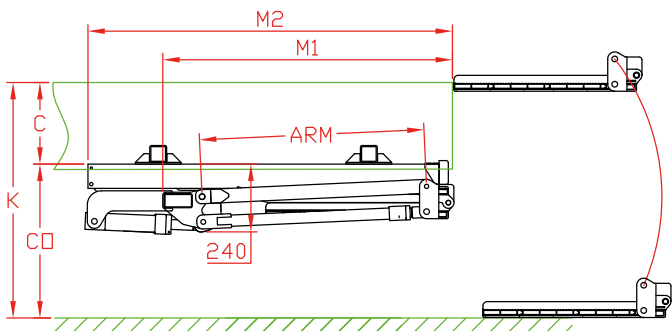
Lift capacity

CAP	CG	LM
400 kg	500 mm	2 kNm

Weights [see pg. 15]

ALU / ALU platform	
1400x860 mm	150 kg

City Slider lift with manual retraction



Fitting dimensions

ARM	800 standard
K max.	1100
C max.	400
CO max.	700
M1	1040
M2	1300



Technical specifications

Lift frame	100 x 50 mm
Cylinders	2 lift cylinders + 2 fixed stabilisers
Retraction IN / OUT	Manual
Type of ride [see pg. 8-9]	Flat platform, level ride
Platform material	Steel frame + aluminium profiles
Standard platform depths	1400 mm Other platform depths on request
Standard platform widths	860 - 1100 mm
Lift arm lengths	800 mm
Lift arm widths	930 mm (platform width 860) 1170 mm (platform width 1100)
Standard control unit	2-button control integrated in the pump unit
Standard finish of the lift frame	Protection PLUS [OAT102]



→ Slider lift for vans and light trucks

DH-SC.05 • 500 kg



The DH-SC.05 is the **heavy-duty** version of the **CITY SLIDER lift** and is usually mounted on van chassis and light commercial trucks.

In its travel position, the platform is safely stored underneath the chassis of the vehicle and the driver has free access to the cargo space inside the vehicle.

In its work position, the platform offers sufficient work surface to manipulate roll-cages, white and brown goods, parcels, etc...

In comparison, the DH-SC.05 is heavier duty than the .04 version (see previous page) and is equipped with **hydraulic instead of manual retraction**.

Lift capacity

CAP	CG	LM
500 kg	500 mm	2.5 kNm

Weights [see pg. 15]

ALU / ALU platform	
1400x860 mm	210 kg
1400x1100 mm	215 kg

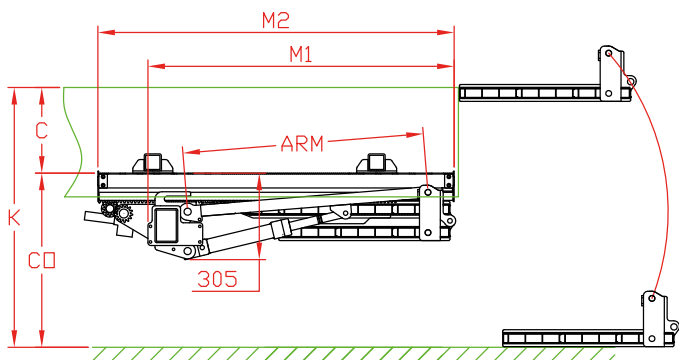
Weights incl. CE bumper (option OAF150)

City Slider lift with hydraulic retraction



Fitting dimensions

ARM	850
K max.	1200
C max.	400
CO max.	800
M1	1080
M2	1260



Technical specifications

Lift frame	120 x 80 mm
Cylinders	2 lift cylinders + 2 fixed stabilisers
Retraction IN / OUT	Hydromotor + gear wheel system
Type of ride [see pg. 8-9]	Flat platform, level ride
Platform material	Steel frame + aluminium profiles
Standard platform depths	1400 mm Other platform depths on request
Standard platform widths	860 - 1100 mm
Lift arm lengths	850 mm
Lift arm widths	1060 mm (platform width 860) 1300 mm (platform width 1100)
Standard control unit [see pg. 11]	OAE030.BT
Standard finish of the lift frame	Protection PLUS [OAT102]



→ Slider lift for light and medium size trucks

DH-SM.15 • 1000 - 1500 kg



The DH-SM.15 is the **lightest of the conventional slider lifts** with single fold platforms. It is equipped with a compact lift frame and short lift arms, in order to **minimize the required overhang**. As a consequence, it forms a modern and lighter weight alternative to the short overhang lift DH-SMP.20 in 1500 kg execution.

In its travel position, the DH-SM.15 is **safely stored underneath the chassis of the vehicle**. It is ideal for operations needing frequent fork lift loading or access to loading docks, and all applications requiring quick and free access to the cargo space.

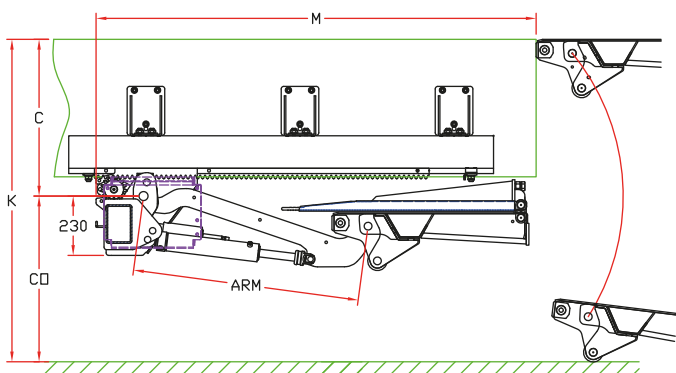
Lift capacity

CAP	CG	LM
1000 kg	750 mm	7.5 kNm
1500 kg	750 mm	11.25 kNm

Weights [see pg. 15]

STEEL / ALU		ALU / ALU	
1500 mm	420 kg	1500 mm	380 kg
1700 mm	430 kg	1700 mm	390 kg
1800 mm	435 kg	1800 mm	395 kg

Light 4-cylinder slider lift with single fold platform



Fitting dimensions

ARM		720	800	880
K max.		1190	1295	1420
C max.		605	665	720
CO max.		585	630	700
M	1500 mm platform	1530	1610	1690
M	1700 mm platform	1630	1710	1790
M	+ option OAP610	-100	-100	-100

Technical specifications

Lift frame	100 x 150 mm
Cylinders	2 lift cylinders + 2 tilt cylinders
Retraction IN / OUT	Hydromotor + gear wheel system
Type of ride [see pg. 8-9]	Wedged platform. Level ride + automatic tilt at ground level
Platform material	Steel / Alu or Alu /Alu
Standard platform depths	1500 - 1700 - 1800 mm
Standard platform widths	2100 - 2300 - 2400 mm Other widths on request (OAP603)
Lift arm lengths	720 - 800 - 880 mm
Lift arm widths	1300 mm
Standard control unit [see pg. 11]	OAE030.BT
Standard finish of the lift frame	Hot-dip zinc plated finish [OAT104]



→ Slider lift for trucks, trailers and semi-trailers

DH-SM(R).20 • 1500 - 2000 kg



The DH-SM(R).20 is the **top seller slider lift in the medium capacity range**. This versatile lift is able to handle various types of cargo, including pallets, up to max. 2000 kg.

In its travel position, the DH-SM.20 is **safely stored underneath the chassis of the vehicle**. It is ideal for operations needing frequent fork lift loading or access to loading docks, and all applications requiring quick and free access to the cargo space.

There are 2 executions: the DH-SM.20 designed for **truck chassis** and the DH-SMR.20 designed for **quick-fitting on trailer and semi-trailer** chassis.

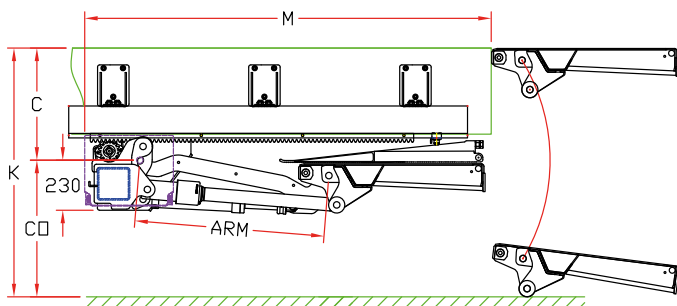
Lift capacity

CAP	CG	LM
1500 kg	750 mm	11.25 kNm
2000 kg	750 mm	15 kNm

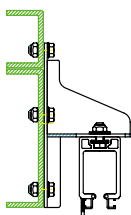
Weights [see pg. 15]

STEEL / ALU		ALU / ALU	
1500 mm	475 kg	1500 mm	445 kg
1700 mm	495 kg	1700 mm	460 kg
1800 mm	505 kg	1800 mm	467 kg

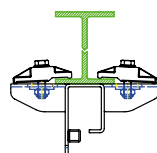
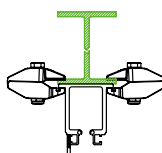
Medium-duty 4-cylinder slider lift single fold platform



Truck / DH-SM.20



Trailer / Semi-trailer / DH-SMR.20
Standard OAM032.A
Optional OAM032.S



Fitting dimensions

ARM		760	820	880	940	1000	1100
K max.		1215	1330	1410	1500	1585	1725
C max.		625	680	715	770	815	895
CO max.		590	650	695	730	770	830
M	1500 mm platform	1640	1700	1760	1820	1880	1980
M	1700 mm platform	1740	1800	1860	1920	1980	2080
M	+ option OAP610	-100	-100	-100	-100	-100	-100

Technical specifications

Lift frame	150 x 150 mm
Cylinders	2 lift cylinders + 2 tilt cylinders
Retraction IN / OUT	Hydromotor + gear wheel system
Type of ride [see pg. 8-9]	Wedged platform. Level ride + automatic tilt at ground level
Platform material	Steel / Alu or Alu / Alu
Standard platform depths	1500 - 1700 - 1800 mm Longer platforms on request (OAP602)
Standard platform widths	2100 - 2300 - 2400 mm Other widths on request (OAP603)
Lift arm lengths	760 - 820 - 880 - 940 - 1000 - 1100 mm
Lift arm widths	800 (SMR only) - 1300 - 1550 mm
Standard control unit [see pg. 11]	OAE030.BT
Standard finish of the lift frame	Hot-dip zinc plated finish [OAT104]



→ Slider lift for trucks, trailers and semi-trailers

DH-SM(R).30 • 2000 - 3000 kg



The DH-SM(R).30 is the **heavy duty slider lift**. Its robust lift mechanism, reinforced platform and hydraulic system are designed for intensive, heavy duty applications and “hostile environment” circumstances. It is ideal for the most demanding applications in the regular transport business, such as **supermarket & food distribution**.

In its travel position, the DH-SM.30 is **safely stored underneath the chassis of the vehicle**. It is ideal for operations needing frequent fork lift loading or access to loading docks, and all applications requiring quick and free access to the cargo space.

DHOLLANDIA's top of the range **4-cylinder** slider lift is available in 2 executions: the DH-SM.30 designed for **truck chassis** and the DH-SMR.30 designed for **quick-fitting on trailer and semi-trailer chassis**.

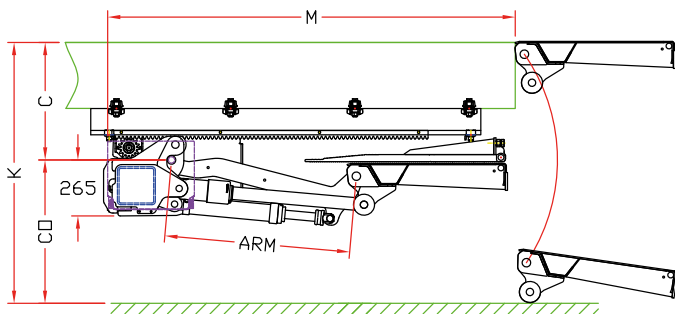
Lift capacity

CAP	CG	LM
2000 kg	1000 mm	20 kNm
2500 kg	1000 mm	25 kNm
3000 kg	1000 mm	30 kNm

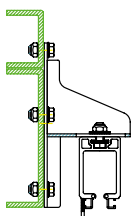
Weights [see pg. 15]

STEEL / ALU		ALU / ALU	
1700 mm	580 kg	1700 mm	530 kg
1800 mm	590 kg	1800 mm	540 kg

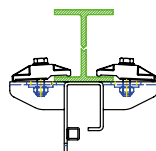
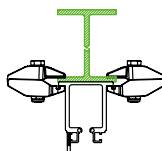
The most powerful slider lift, with single fold platform



Truck / DH-SM.30



Trailer / Semi-trailer / DH-SMR.30
Standard OAM032.A
Optional OAM032.S



Fitting dimensions

ARM		820	880	940	1000	1100	1200
K max.		1330	1420	1500	1590	1730	1870
C max.		680	730	780	820	900	980
CO max.		650	690	720	770	830	890
M	1700 mm platform	1830	1890	1950	2010	2110	2210
M	1800 mm platform	1930	1990	2050	2110	2210	2310
M	+ option OAP610	-100	-100	-100	-100	-100	-100

Technical specifications

Lift frame	180 x 180 mm
Cylinders	2 lift cylinders + 2 tilt cylinders
Retraction IN / OUT	Hydromotor + gear wheel system
Type of ride [see pg. 8-9]	Wedged platform. Level ride + automatic tilt at ground level
Platform material	Steel / Alu or Alu / Alu
Standard platform depths	1700 - 1800 mm Longer platforms on request (OAP602)
Standard platform widths	2300 - 2400 mm Other widths on request (OAP603)
Lift arm lengths	820 - 880 - 940 - 1000 - 1100 - 1200 mm
Lift arm widths	800 - 1300 - 1550 mm
Standard control unit [see pg. 11]	OAE030.BT
Standard finish of the lift frame	Hot-dip zinc plated finish [OAT104]



→ Slider lift for trucks, trailers and semi-trailers

DH-SMP.20 • 1500 - 2000 kg



The new DH-SMP (launched 2014) can replace the standard DH-SM.20 to solve a number of mounting issues:

- It is equipped with a compact lift frame, that requires **130 mm less overhang** than a DH-SM.20 with equivalent platform.
- The new execution is equipped with a hydromotor + gearwheel system instead of a centrally mounted retraction cylinder, but its position is more favourable for a short-overhang situation than on the DH-SM.20. Hence the DH-SMP can be mounted around and **alongside the spring hangers** of vehicles with mechanical suspension, and **use the full overhang to the mudguard**.

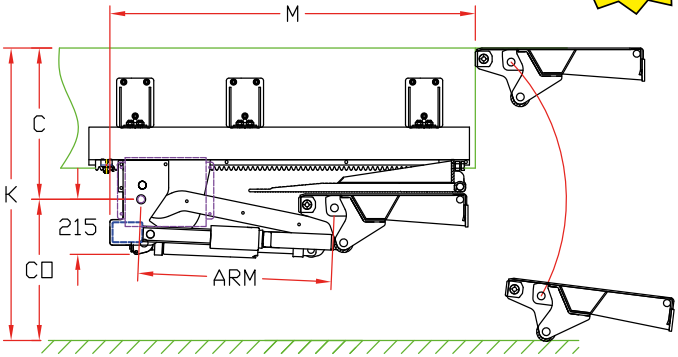
Lift capacity

CAP	CG	LM
1500 kg	750 mm	11.25 kNm
2000 kg	750 mm	15 kNm

Weights [see pg. 15]

STEEL / ALU		ALU / ALU	
1500 mm	460 kg	1500 mm	430 kg
1700 mm	480 kg	1700 mm	445 kg
1800 mm	490 kg	1800 mm	452 kg

Single fold platform with shorter overhang



Fitting dimensions

ARM		760	820	880	940	1000	1100
K max.		1215	1330	1410	1500	1585	1725
C max.		625	680	715	770	815	895
CO max.		590	650	695	730	770	830
M	1500 mm platform	1510	1570	1630	1690	1750	1850
M	1700 mm platform	1610	1670	1730	1790	1850	1950
M	+ option OAP610	-100	-100	-100	-100	-100	-100

Technical specifications

Lift frame	Compact lift frame for short overhang
Cylinders	2 lift cylinders + 2 tilt cylinders
Retraction IN / OUT	Hydromotor + gear wheel system
Type of ride [see pg. 8-9]	Wedged platform. Level ride + automatic tilt at ground level
Platform material	Steel / Alu or Alu / Alu
Standard platform depths	1500 - 1700 - 1800 mm Longer platforms on request (OAP602)
Standard platform widths	2100 - 2300 - 2400 mm Other widths on request (OAP603)
Lift arm lengths	760 - 820 - 880 - 940 - 1000 - 1100 mm
Lift arm widths	1300 - 1550 mm
Standard control unit [see pg. 11]	OAE030.BT
Standard finish of the lift frame	Protection PLUS [OAT102]



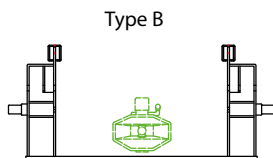
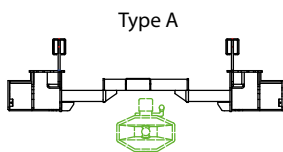
→ Slider lift for trucks with trailer coupling

DH-SV.20 • 1500 - 2000 kg



The **DH-SV** is designed for **trucks with a central-axle draw bar trailer**. In order to optimize the mounting situation, the DH-SV is **custom made** in function of the specific dimensions of the chassis, the trailer coupling and the draw bar.

Depending on the vehicle dimensions, the DH-SV can be deployed and used without uncoupling the trailer (when type A lift frame can be used, which is in most cases).



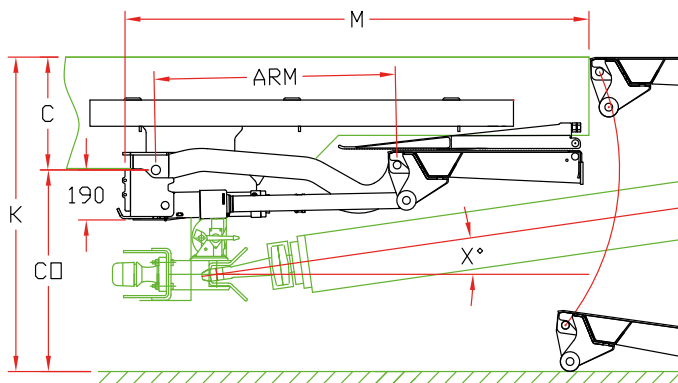
Lift capacity

CAP	CG	LM
1500 kg	750 mm	11.25 kNm
2000 kg	750 mm	15 kNm

Weights [see pg. 15]

STEEL / ALU		ALU / ALU	
1500 mm	580 kg	1500 mm	550 kg
1700 mm	600 kg	1700 mm	565 kg

Designed for trucks with a draw-bar trailer



Fitting dimensions

ARM		820	880	940	1000
K max.		1360	1460	1560	1660
C max.		650	700	750	800
CO max.		710	760	810	860
M (1) (2)	1500 mm platform	1600	1660	1720	1780
M (1) (2)	1700 mm platform	1700	1760	1820	1880
M (1) (2)	+ option OAP610	-100	-100	-100	-100

(1) In order to create sufficient clearance to the draw bar, the lift might need to be fitted further forward. Consult **DHOLLANDIA** for a detailed study.

(2) Overhang measured to the end of the lift frame. Retraction cylinder between chassis rails not taken into account

Technical specifications

Lift frame	Custom made around the coupling
Cylinders	2 lift cylinders + 2 tilt cylinders
Retraction IN / OUT	Centrally mounted retraction cylinder
Type of ride [see pg. 8-9]	Wedged platform. Level ride + automatic tilt at ground level
Platform material	Steel / Alu or Alu / Alu
Standard platform depths	1500 - 1700 - 1800 mm Longer platforms on request (OAP602)
Standard platform widths	2300 - 2400 mm Other widths on request (OAP603)
Lift arm lengths	820 - 880 - 940 - 1000 mm
Lift arm widths	1300 - 1450 - 1550 mm
Standard control unit [see pg. 11]	OAE030.BT
Standard finish of the lift frame	Protection PLUS [OAT102]



→ Slider lift for light trucks, trailers and semi-trailers

DH-SO.10 • 750 - 1000 kg



The DH-SO.10 is the lightest and most compact solution of the slider lift range.

- The 2 platform parts are made of light-weight aluminium, to **maximise the pay-load of the vehicle**, and make the manual (un) folding of the platform as easy as possible for the operator.
- The compact lift frame and double folded platform enable installation of this lift on vehicles with **very short overhang**.

The DH-SO.10 offers 750-1000 kg lift capacity, and is extremely suitable for light-duty trucks from 3,5 to 12T GVW, light trailers and semi-trailers. Special mounting kits are available for installation on van chassis.

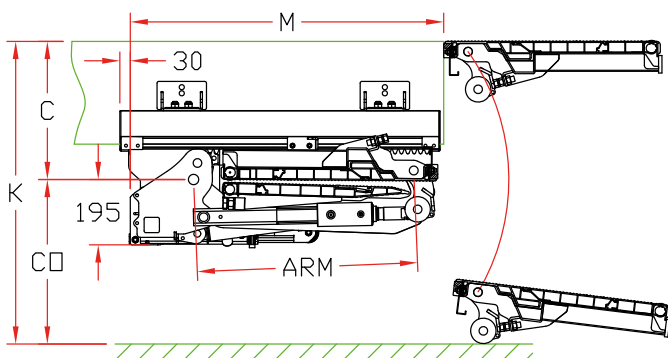
Lift capacity

CAP	CG	LM
750 kg	600 mm	4.5 kNm
1000 kg	600 mm	6 kNm

Weights [see pg. 15]

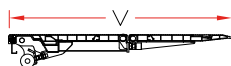
ALU / ALU platform	
1250x2200 mm	265 kg
1450x2200 mm	272 kg
1600x2200 mm	280 kg

Lightest slider lift with double folded platform



Fitting dimensions

ARM	650	750	850
K max.	1035	1180	1315
C max.	490	570	645
CO max.	545	610	670
M	910	1010	1110
V max.	1200	1400	1600



Technical specifications

Lift frame	Compact lift frame 120 x 120 mm
Cylinders	2 lift cylinders + 2 fixed stabilisers [2 tilt cylinders as an option (S507)]
Retraction IN / OUT	Hydromotor + gear wheel system
Type of ride [see pg. 8-9]	Wedged platform. Level ride + automatic tilt at ground level
Platform material	Alu / Alu
Standard platform depths	1200 - 1400 - 1600 mm
Standard platform widths	2200 mm Other widths on request (OAP603)
Lift arm lengths	650 - 750 - 850 mm
Lift arm widths	420 - 1300 - 1420 mm
Standard control unit [see pg. 11]	OAE030.BT
Standard finish of the lift frame	Hot-dip zinc plated finish [OAT104]



→ Slider lift for trucks, trailers and semi-trailers

DH-SO7.20 • 1500 - 2000 kg



In comparison to the standard slider lifts DH-SM(R), the various DH-SO... lifts are equipped with a **double folded platform**: their platform is folded twice and rests on the lift arms when stowed away in travel position. Hence these DH-SO... lifts are specially designed for installation on **commercial vehicles with a too short overhang** to mount standard slider lifts with single folded platform (e.g. semi-trailers with rear steering axle, and centre-axle trailers).

The 2 platform parts are made of light-weight aluminium, to make the unfolding of the platform into work position (and the folding of the platform into travel position) as easy as possible.

The DH-SO.07 offers 1500-2000 kg lift capacity, and serves the top segment of the slider lifts with double folding platforms. It is suitable for trucks from 7 to 25T GVW, for trailers and semi-trailers.

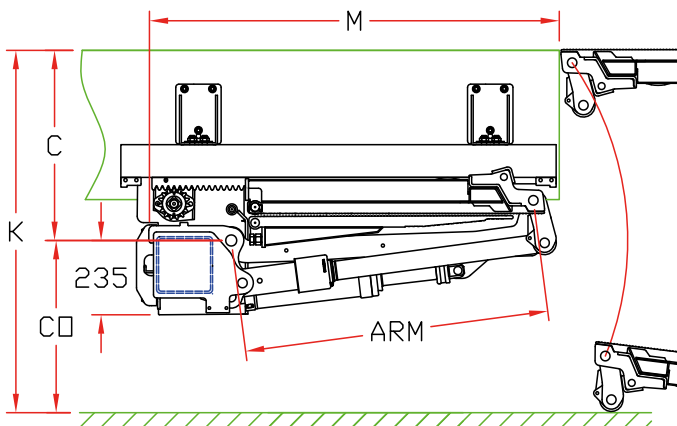
Lift capacity

CAP	CG	LM
1500 kg	750 mm	11.25 kNm
2000 kg	750 mm	15 kNm

Weights [see pg. 15]

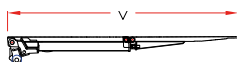
ALU / ALU	
1400 mm	485 kg
1600 mm	505 kg
1800 mm	530 kg

Double folded platform for vehicles with short overhang



Fitting dimensions

ARM	780	880	980	1080
K max.	1290	1440	1560	1760
C max.	640	710	780	880
CO max.	650	730	780	880
M	1125	1225	1325	1425
V max.	1400	1600	1800	1800
V min.	1400	1400	1600	1800



Technical specifications

Lift frame	180 x 180 mm
Cylinders	2 lift cylinders + 2 tilt cylinders
Retraction IN / OUT	Hydromotor + gear wheel system
Type of ride [see pg. 8-9]	Wedged platform. Level ride + automatic tilt at ground level
Platform material	Alu / Alu
Standard platform depths	1400 - 1600 - 1800 mm
Standard platform widths	2300 - 2400 mm Other widths on request (OAP603)
Lift arm lengths	780 - 880 - 980 - 1080 mm
Lift arm widths	800 - 1450 - 1550 mm
Standard control unit [see pg. 11]	OAE030.BT
Standard finish of the lift frame	Hot-dip zinc plated finish [OAT104]



→ Slider lift for trucks, trailers and semi-trailers with demountable containers

DH-SO8.20 • 1500 - 2000 kg



Like the other DH-SO... lifts, the DH-SO8 is equipped with a **double folded platform**, to enable its installation in a **very short overhang**. Unlike the other types however, the platform of the DH-SO8 consists of 3 sections: a sturdy fixed steel section, which also forms the bumper; and 2 light-weight aluminium folding sections.

The DH-SO8 is specially designed for commercial vehicles with **BDF / AWL swap bodies**. The front edge of the platform can be equipped with an articulated bridge plate, allowing for flexible adjustment of the platform edge to varying body types and dimensions.

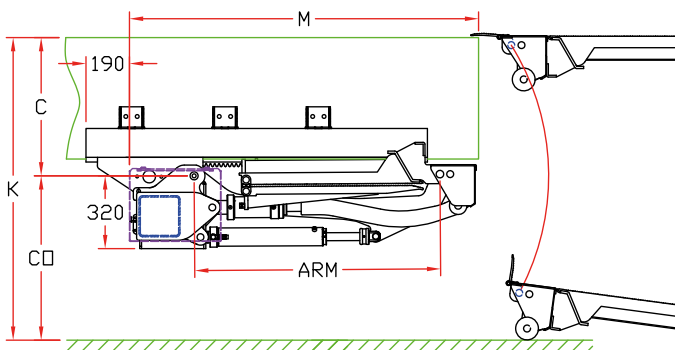
Lift capacity

CAP	CG	LM
1500 kg	750 mm	11.25 kNm
2000 kg	750 mm	15 kNm

Weights [see pg. 15]

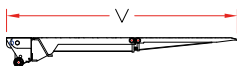
STEEL / ALU / ALU	
1600 mm	580 kg
1800 mm	600 kg

Double folded platform, for swap bodies & containers



Fitting dimensions

ARM	980	1080
K max.	1585	1685
C max.	780	880
CO max.	805	805
M	1420	1520
V max.	1800	1800



Technical specifications

Lift frame	180 x 180 mm
Cylinders	2 lift cylinders + 2 tilt cylinders
Retraction IN / OUT	Hydromotor + gear wheel system
Type of ride [see pg. 8-9]	Wedged platform. Level ride + automatic tilt at ground level
Platform material	Steel / Alu / Alu
Standard platform depths	1600 - 1800 mm
Standard platform widths	2300 mm Other widths on request (OAP603)
Lift arm lengths	980 - 1080 mm
Lift arm widths	1300 mm
Standard control unit [see pg. 11]	OAE030.BT
Standard finish of the lift frame	Hot-dip zinc plated finish [OAT104]



→ Slider lift for trucks & semi-trailers

DH-SK(S).20 • 1500 - 2000 kg



The DH-SK(S).20 combines the advantages of a column lift with those of a slider lift. From the first, it inherited the **flat, level-ride platform**, which is ideal to load and unload **roll-cages**, and cargo that could be unstable on the platform. (Conventional slider lift are equipped with a wedge platform, so that wheeled loads have a tendency to roll-off; and tall top-heavy loads risk to tip-over).

The sliding mechanism of the latter safely stores the platform away underneath the chassis of the vehicle, **eliminating almost completely the risk of impact damage** when reversing into the loading docks (which is a genuine concern in the case of column lifts).

Most DH-SK are supplied with rear and side loading ramps, which can be raised in vertical position to serve as load restraints; or flipped over 180° to serve as access ramp.

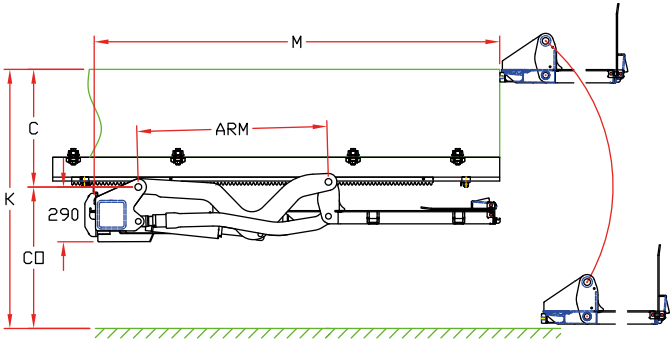
Lift capacity

CAP	CG	LM
1500 kg	750 mm	11.25 kNm
2000 kg	750 mm	15 kNm

Weights [see pg. 15]

Steel platform	
1300 mm	670 kg
1500 mm	670 kg
1700 mm	685 kg

Ideal for roll cages: flat “column lift” style platform



Fitting dimensions

ARM		900	1000
K max.		1350	1525
C max.		560	640
CO max.		790	885
M - SK(S).20.03	1300 mm platform	2250	2350
M - SK(S).20.04	1300 mm platform	-125 (1)	-125 (1)

(1) 125 mm shorter overhang possible with frame type SKS.20.4 instead of SKS.20.3.

Technical specifications

Lift frame	<ul style="list-style-type: none"> • Standard SK(S).20.03: tube 180 x 180 mm • Compact SK(S).20.04: special frame
Cylinders	<ul style="list-style-type: none"> • SK...: 2 lift cylinders + 2 tilt cylinders • SKS...: 2 lift cylinders + 2 fixed stabilisers
Retraction IN / OUT	Hydromotor + gear wheel system
Type of ride [see pg. 8-9]	Flat platform, level ride
Standard platform depths	<ul style="list-style-type: none"> • 1300 mm in 1 piece • 1500 - 1700 mm as foldable platform
Platform width PB / arm width CA	SK(S).20.03: PB=2350 CA=2250 • PB=2450 CA=2350 • PB=2550 CA=2450 SKS.20.04: PB=2350 CA=2250 • PB=2450 CA=2350
Lift arm lengths	900 - 1000 mm
Standard control unit [see pg. 11]	OAE030.BT
Standard finish of the lift frame	Hot-dip zinc plated finish [OAT104]



→ Slider lift for trucks & semi-trailers

DH-SKS2.20 • 1500 - 2000 kg



The DH-SKS2.20 is a special execution of the flat platform level-ride slider lift, with the following benefits:

- reduced proper weight of the lift, **increased pay-load for the vehicle**
- **reduced overhang** / fitting space

The DH-SKS2.20 is available with a hot-dip zinc plated steel platform, or with a light-weight aluminium platform.

The rear and side loading ramps on the platform can be raised in vertical position to serve as load restraints; or flipped over 180° to serve as access ramp.

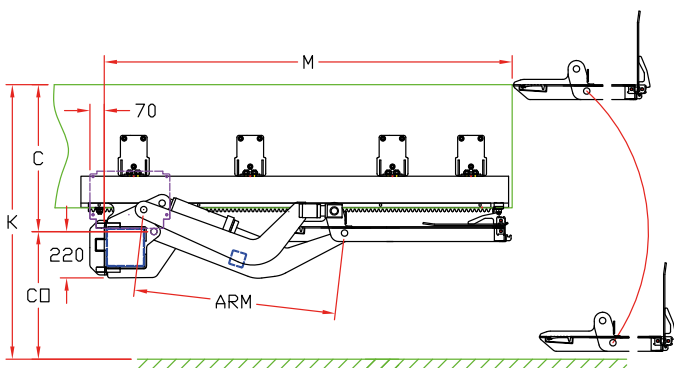
Lift capacity

CAP	CG	LM
1500 kg	750 mm	11.25 kNm
2000 kg	750 mm	15 kNm

Weights [see pg. 15]

Steel platform	
1300 mm	630 kg

Lighter weight flat platform slider lift



Fitting dimensions

ARM		900
K max.		1410
C max.		725
CO max.		685
M - SKS2.20.01	1300 mm platform	2100

Technical specifications

Lift frame	SKS2.20.01: 180 x 180 mm
Cylinders	2 lift cylinders + 2 fixed stabilisers
Retraction IN / OUT	Hydromotor + gear wheel system
Type of ride [see pg. 8-9]	Flat platform, level ride
Standard platform depths	1300 mm in 1 piece
Platform width PB / arm width CA	PB=2450 CA=2280
Lift arm lengths	900 mm
Standard control unit [see pg. 11]	OAE030.BT
Standard finish of the lift frame	Protection PLUS [OAT102]

www.dhollandia.com



DHOLLANDIA

IZ E17-1072 Zoomstraat 9 • 9160 Lokeren • Belgium
Tel. +32 (0)9 349 06 92 • Fax +32 (0)9 349 09 77
www.dhollandia.com • info@dhollandia.be

DHOLLANDIA UK LTD

7 Latham Road • Huntingdon, Cambridgeshire
PE29 6YG • United Kingdom
Tel. +44 1480 435 266 • Fax +44 1480 431 823
info@dhollandia.com